

## Project 452: New Secondary School SEN Facility

**Client:** Greenacre School, Chatham, Kent

**Programme:** 5 Weeks

**Construction Details:** Aluminium Doors, Building Control, Carpentry, Decorating, Electrical Works, Floor Coverings, Flooring, Partitioning, Plastering, Plumbing, Rainwater Goods, Refurbishment, Renovation, Sanitary Ware, School Improvement, Toilet Cubicles

[View this case study on WallerServices.com](https://www.wallerservices.com)



## **New Secondary School SEN Facility**

### **Delivering a Purpose-Built Learning Environment**

Following a successful competitive tender submission, we were appointed to deliver a new Special Educational Needs (SEN) facility for a local secondary school. The project involved transforming an underutilised section of the main school building into a modern, functional and supportive learning environment tailored to the needs of both pupils and staff.

Working in close partnership with the school's Trust and Facilities team, we successfully delivered a high-quality space that aligned with the school's vision while ensuring minimal disruption to day-to-day operations.

### **The Project Brief**

The area identified for redevelopment consisted of two large former science classrooms and an adjacent science technician's office. The school's objective was to create a dedicated SEN unit that would provide flexible teaching spaces and enhanced support facilities.

The completed scheme included:

- Six individual teaching rooms
- Two accessible toilet facilities
- A central breakout area with a kitchenette
- A standalone office for the lead teaching member of staff, positioned within the unit to provide greater accessibility and support

From the outset, we worked closely with the Trust's Estates and Facilities Development Manager to ensure every aspect of the project met the operational and educational requirements of the school.

### **Our Solution**

To bring the new layout to life, our team carried out a full internal refurbishment and reconfiguration of the existing space. The works included:

- Installation of new partition walls to create the individual teaching rooms
- Fitting of new fire-rated doors to meet current safety regulations
- Complete electrical upgrades throughout the facility
- Installation of new flooring finishes
- Full internal decoration across all areas

In addition, we managed the Building Control application process on behalf of the school, securing

all necessary approvals and achieving full sign-off upon completion.

### **Working Within a Live School Environment**

As the programme extended beyond the school holidays, the majority of the construction works were undertaken during term time. Careful planning and close collaboration with the school enabled us to carry out the project safely and efficiently without disrupting teaching activities.

A secure working area was established using temporary fencing, ensuring complete separation between the construction zone and the operational school environment. Furthermore, all members of our site team held Enhanced DBS certification, providing the school with complete confidence and peace of mind throughout the project.

### **The Outcome**

The completed SEN facility provides a welcoming, practical and purpose-built environment designed to support students with additional educational needs. By transforming redundant teaching spaces into a dedicated learning hub, the school has gained a flexible and modern facility that will serve its pupils and staff for many years to come.

This project demonstrates our ability to successfully deliver complex refurbishment works within occupied educational settings, combining careful planning, regulatory compliance and close client collaboration to achieve outstanding results.

For more projects similar to this one, please click on the following link- [www.wallerservices.com](http://www.wallerservices.com)

### **Building Services We Provide In Schools**

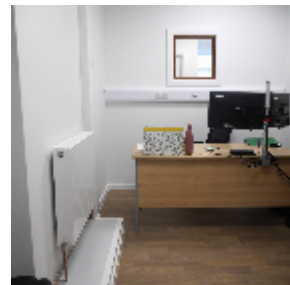
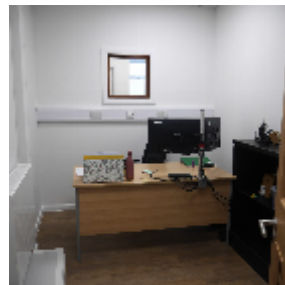
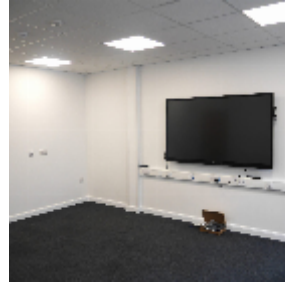
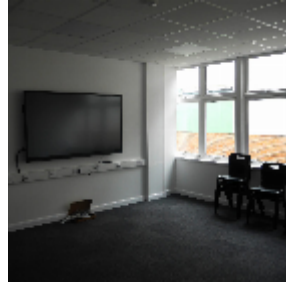
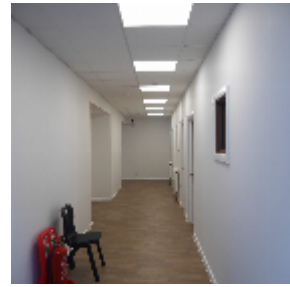
The building services we provide include smaller refurbishments through to extensions and new builds. The services we provide include anything that a school would require. This includes, toilet and kitchen refurbishments. We also install fencing, flooring and carry out complete new builds. Check out our website case studies to view projects that we have recently completed.

### **Glazing Services We Provide In Schools**

In addition to building works, we also carry out works from window and hinge repairs through to complete aluminium and uPVC window and door installations.

### **Contact Waller Building and Glazing Services**

Based in Sittingbourne, we carry out works Kent as well as the south east of England. If you would like a quotation on any size of building or glazing project please contact us. Telephone – 01795 424435. Additionally email [mark@wallerservices.com](mailto:mark@wallerservices.com)



## Building on trust... together

**Waller Associates Ltd**

Web: [www.wallerservices.com](http://www.wallerservices.com)

Tel: 01795 424 435

Fax: 01795 424 812

[sales@wallerservices.com](mailto:sales@wallerservices.com)