

## Project 442 – New Teaching Block

**Client:** Fulston Manor School, Sittingbourne, Kent

**Programme:** 12 Months

**Construction Details:** Air Source Heat Pump, Aluminium Doors, Aluminium Windows, Brickwork, Building Control, Carpentry, Cubicles, Decorating, Decorations, Demolition, Double Glazed, Electrical Works, Floor Coverings, Ground Works, Mechanical Heat Recovery System, Partitioning, Partitioning, Plastering, Plumbing, Roofing, Safety Glass, Sanitary Ware, Scaffolding, School Improvement, Solar Panels, Structural Steelwork, Suspended Ceilings, Toilet Cubicles, Under Floor Heating

[View this case study on WallerServices.com](https://www.waller-services.com/case-study/project-442-new-teaching-block)



## **New Teaching Block**

Following our successful completion of the new science block, Fulston Manor invited us to tender for the construction of a new teaching block. The brief was to deliver a stand-alone, two storey building to support a satellite provision, enabling a local special educational needs school to use two of the classrooms. This approach was designed to encourage integration between students with additional needs and mainstream pupils within the wider school environment.

## **Modular Building Demolition and Removal**

Prior to the commencement of construction, it was necessary to demolish and remove an existing modular building to clear the site. This phase was carefully managed to minimise disruption to the school. Once the modular structure had been safely removed, enabling works were completed and construction of the new teaching block began.

## **The Build**

The new facility was constructed as a steel-framed, traditional blockwork building, finished with a combination of render and external cladding. An insulated pitched roof system and aluminium double-glazed windows completed the building envelope.

To ensure full compliance with current building regulations, Simplified Building Energy Model (SBEM) calculations were undertaken. These informed the inclusion of a range of energy-efficient measures, including solar panels, an air source heat pump, a mechanical heat recovery system and underfloor heating. This specification was essential in delivering a stand-alone building that is both energy efficient and environmentally responsible.

The completed teaching block provides six classrooms in total: two dedicated to special educational needs provision and four for mainstream teaching. Office accommodation and staff and student welfare facilities were also incorporated to create a fully functional learning environment.

## **Lift System**

As a two-storey building, the project required the installation of a lift system to ensure full accessibility for students and staff with mobility or additional needs, reinforcing the inclusive nature of the facility.

## **The Finishing Touches**

Internal flooring and decoration were completed throughout the building, preparing the spaces for immediate use by the school. The final element of the project was the construction of a new tarmac access road, linking the school car park directly to the entrance of the teaching block and

providing safe, convenient access for all users.

## **Client Feedback**

Throughout the project, the school commented positively on the professionalism, courtesy and consideration shown by our site team. Care was taken at all times to work safely within a live school environment. On completion, Fulston Manor expressed their delight not only with the standard of the finished building, but also with the manner in which the works were delivered from start to finish.

For more projects similar to this one, please click on the following link- [www.wallerservices.com](http://www.wallerservices.com)

-

## **Building Services We Provide In Schools**

The building services we provide include smaller refurbishments through to extensions and new builds. The services we provide include anything that a school would require. This includes, toilet and kitchen refurbishments. We also install fencing, flooring and carry out complete new builds. Check out our website case studies to view projects that we have recently completed.

## **Glazing Services We Provide In Schools**

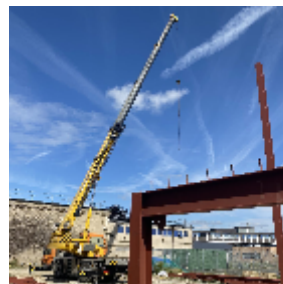
In addition to building works, we also carry out works from window and hinge repairs through to complete aluminium and uPVC window and door installations.

## **Contact Waller Building and Glazing Services**

Based in Sittingbourne, we carry out works Kent as well as the south east of England. If you would like a quotation on any size of building or glazing project please contact us. Telephone – 01795 424435. Additionally email [mark@wallerservices.com](mailto:mark@wallerservices.com)

-

-





Building on trust... together

**Waller Associates Ltd**

Web: [www.wallerservices.com](http://www.wallerservices.com)

Tel: 01795 424 435

Fax: 01795 424 812

[sales@wallerservices.com](mailto:sales@wallerservices.com)