

Project 432: Maidstone School Reception Reconfiguration

Client: Barming Primary School, Barming, Maidstone , Kent

Construction Details: Bespoke Reception Desk, Building Control, Carpentry, Decorations, Electrical Works, Floor Coverings, Plastering, Reception Glass, Refurbishment, Safety Glass, School Improvement, Suspended Ceilings

[View this case study on WallerServices.com](https://www.wallerservices.com)



Maidstone School Reception Reconfiguration

We carried out this Maidstone school reception reconfiguration project during term time. The school wanted the works to be completed as soon as possible. Due to good communication with the school, we were able to produce a schedule of works which meant that they knew what works we were carrying out at any one time. The school also introduced a new, temporary school entrance and relocated office staff. The temporary entrance meant that we could start straight away without any staff or students being effected. In addition, all of our contractors hold enhanced DBS certificates which supplies the school with the reassurances that they require.

The Project

The school required a reception with a more open feel to welcome visitors. We removed a wall which contained a small, glass sliding hatch. This was replaced with a new bespoke desk and glass screens. The new glass screens, which are held in place by brackets positioned on the desk and ceiling, provide a lighter and more open feeling. In addition, the school requested an open planned office to improve communication between the staff. This was achieved by removing a second wall. We also created a new storage area. The final touch was to completely decorate the whole area in the school's preferred colours.

We worked closely with building control to ensure that the alterations were compliant with building regulations helping to create a new light and open space to be enjoyed by the office staff and visitors

For more projects similar to this one, please click on the following link www.wallerservices.com

Building Services We Provide In Schools

The building services we provide include smaller refurbishments through to extensions and new builds. The services we provide include anything that a school would require. This includes, toilet and kitchen refurbishments. We also install fencing, flooring and carry out complete new builds. Check out our website case studies to view projects that we have recently completed.

Glazing Services We Provide In Schools

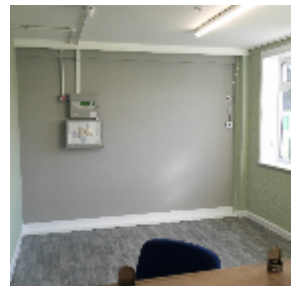
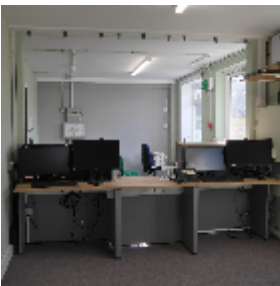
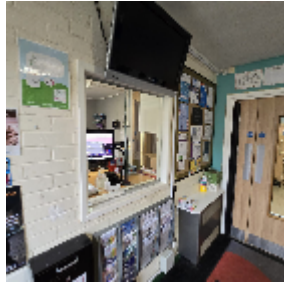
In addition to building works, we also carry out works from window and hinge repairs through to complete aluminium and uPVC window and door installations.

Contact Waller Building and Glazing Services

Based in Sittingbourne, we carry out works Kent as well as the south east of England. If you would

like a quotation on any size of building or glazing project please contact us. Telephone – 01795 424435. Additionally email mark@wallerservices.com

As well as this, see what we are tweeting <https://twitter.com/BuildingOnTrust>



Building on trust... together

Waller Associates Ltd

Web: www.wallerservices.com

Tel: 01795 424 435

Fax: 01795 424 812

sales@wallerservices.com