

## Project 398: Teaching Area Improvement Works

**Client:** Sutton-at-Hone Primary School

**Programme:** 6 Weeks

**Construction Details:** Floor Coverings, Ground Works, Improved Thermal Efficiency, Partitioning, Plastering, Refurbishment, School Improvement, uPVC Windows

[View this case study on WallerServices.com](https://www.wallerservices.com)



## **Teaching Area Improvement Works**

The school had a teaching space that originally took the form of a conservatory type construction. This presented major disadvantages with room temperatures being extremely hot in the summer and very cold in the winter. The school welcomed the idea of enhancing the space whilst also improving U-values and creating a more energy efficient area of the school.

The original structure was removed and a new insulated, timber framed building was constructed.

## **Updated Layout**

The original area consisted of one large teaching space. The new structure was separated into three individual teaching areas. Each new area is complete with an entrance door which improves the flow of students before and after lessons.

The external envelope of the structure was clad in composite panels to enhance the cosmetics of the building. In addition, felt was applied to the roof ensuring that the school was water tight.

## **Improved Thermal Efficiency**

Due to the insulation throughout and new double glazed windows and doors, thermal efficiency has been improved which will mean less energy costs and a more comfortable environment for students and staff.

The school are extremely pleased with the completed area which, due to improved temperature control, can be used all year round.

-

For more projects similar to this one, please click on the following link-  
<http://www.wallerservices.com>

## **Building Services We Provide In Schools**

The building services we provide include smaller refurbishments through to extensions and new builds. The services we provide include anything that a school would require. This includes, toilet and kitchen refurbishments. We also install fencing, flooring and carry out complete new builds. Check out our website case studies to view projects that we have recently completed.

## **Glazing Services We Provide In Schools**

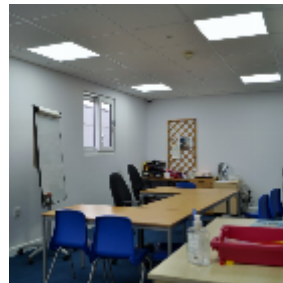
In addition to building works, we also carry out works from window and hinge repairs through to complete aluminium and uPVC window and door installations.

## **Contact Waller Building and Glazing Services**

Based in Sittingbourne, Kent, we carry out works throughout the south east of England. If you would like a quotation on any size of building or glazing project please contact us. Telephone – 01795 424435. Additionally email [mark@wallerservices.com](mailto:mark@wallerservices.com)

To check out what we are up to at the moment visit our Facebook page- <https://www.facebook.com/profile.php?id=100063701672876>

As well as this, see what we are tweeting <https://twitter.com/BuildingOnTrust>



Building on trust... together

**Waller Associates Ltd**

Web: [www.wallerservices.com](http://www.wallerservices.com)

Tel: 01795 424 435

Fax: 01795 424 812

[sales@wallerservices.com](mailto:sales@wallerservices.com)