

## Project 396: Boardroom and Office Refurbishment

**Client:** Wire Belt Company Limited, Sittingbourne, Kent

**Programme:** 16 Weeks

**Construction Details:** Carpentry, Decorating, Floor Coverings, Flooring, Kitchen, Partitioning, Plastering, Plumbing, Refurbishment, Suspended Ceilings

[View this case study on WallerServices.com](http://WallerServices.com)



## **Boardroom and Office Refurbishment**

As well as the boardroom and office refurbishment we also converted a storeroom into a kitchen. The project included the three elements which covered a large area of the 1st floor.

### **Office Refurbishment**

The main part of the project was to convert three offices in to one large open plan area. Firstly, we removed two walls which created one large space. The whole area was then completely refurbished. This included a new carpet and a suspended ceiling throughout. Additionally, the walls were plastered and decorated. New electrics and I.T. data cable was installed to ensure that the office would be future proofed. Once the furniture was installed, the client requested that we install a number of acoustic panels which were attached to the ceiling. This created a open walk way along the side of the office.

### **Kitchen**

As a part of the works the client requested that a large storeroom be utilised and converted into a kitchen. The new kitchen would accessed by staff from the office that was being refurbished. Wood effect ceramic tiles were laid on the floor. The walls were plastered and decorated and new kitchen cabinets and work surfaces were installed to create a contemporary area.

### **Boardroom**

The final part of the project was to completely refurbish the boardroom to create a spacious area with modern feel that could accommodate a large number of staff for meetings. Again, we laid new carpet, plastered and decorated the walls and installed a new suspended ceiling.

-

For more examples of commercial works carried out by Waller Building and Glazing Services please click on the following link-<https://wallerservices.com/commercial-clients/>

## **Commercial Building**

Commercial building is a growth area for Waller Building. We work in the education and healthcare sectors. The retail sector is also an area of growth. This is due to many warehouse developments in the south east. We install toilet and kitchen areas. We also install commercial window and doors. For examples of our services, take a look at our commercial glazing case studies.

## **Waller Building**

In the last 25 years, Waller Building has worked on many commercial projects. Our reputation is growing fast. The services provided range from refurbishment through to extensions and complete

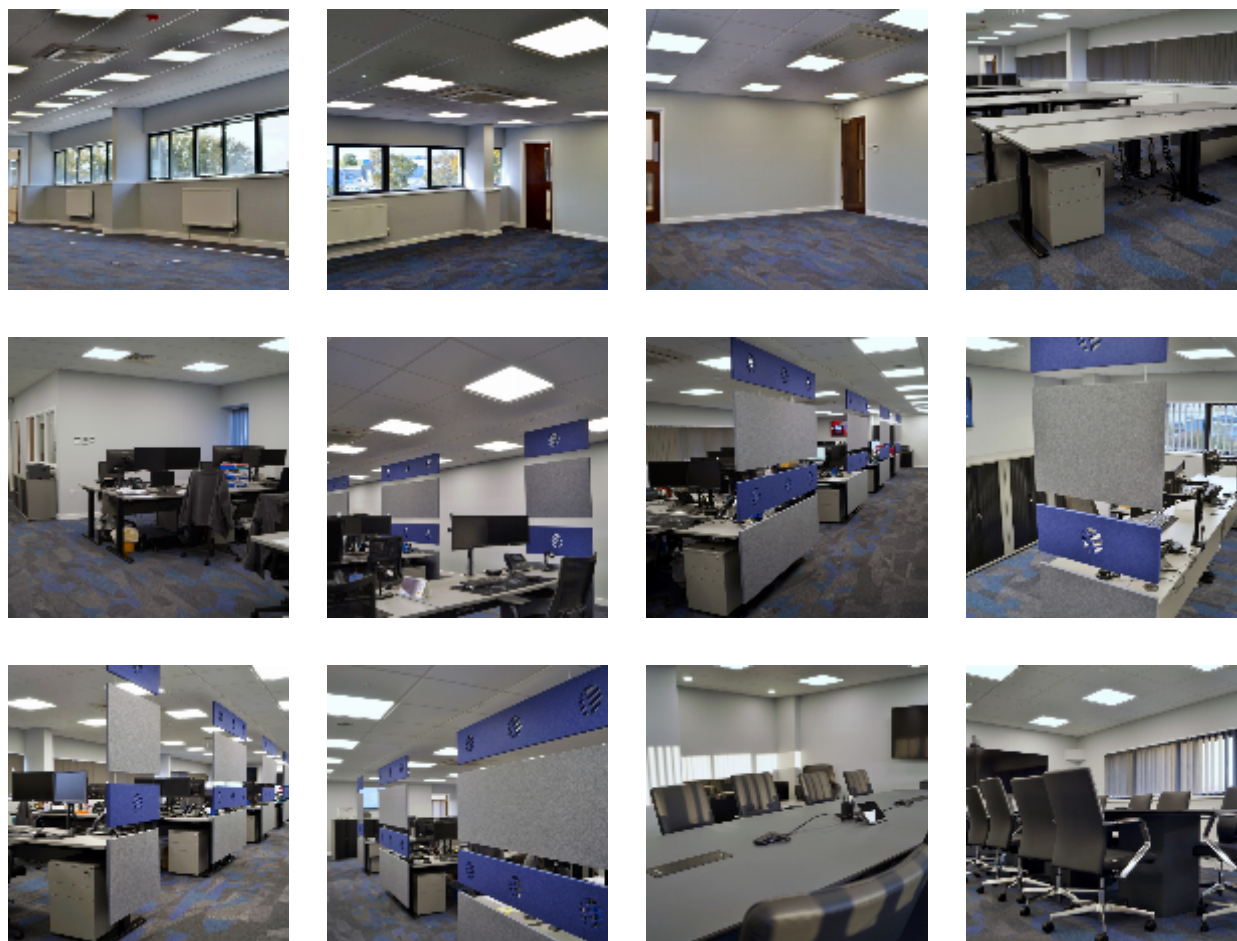
new builds. Additionally our glazing department repairs windows and glass. We also install uPVC and aluminium windows and doors. One of the major areas that we are continuing grow is window replacement in schools. Waller Associates is Fensa, Chas, Constructionline and safecontractor approved. We are also a Kent County Council approved contractor. We would also be happy to give you a price for any refurbishment works.

### Contact Waller Building

Based in Sittingbourne, Kent, we carry out works throughout the south east of England.-If you would like a quotation on any size of glazing projects, please contact us. Call 01795 424435 or email [mark@wallerservices.com](mailto:mark@wallerservices.com)

### Twitter and Facebook

To see what we are up to now, why not take a look at our Twitter page-  
<https://twitter.com/i/notifications>



Building on trust... together

**Waller Associates Ltd**

Web: [www.wallerservices.com](http://www.wallerservices.com)

Tel: 01795 424 435

Fax: 01795 424 812

[sales@wallerservices.com](mailto:sales@wallerservices.com)