

## Project 392: Care Home Window and Door Installation

**Client:** Choice Support

**Programme:** 2 Weeks

**Construction Details:** Toughened Safety Glass, uPVC Windows

[View this case study on WallerServices.com](http://WallerServices.com)



## **Care Home Window and Door Installation**

We carried out this care home window and door installation for a client that we have worked for previously. The care home, based in Twickenham, had single glazed, wooden framed windows that were past their best. Choice Support requested that we upgrade the windows and doors with double glazed uPVC windows.

### **Improved Thermal Efficiency**

The main benefit of the new double glazed windows is improved thermal efficiency. The result is less heat loss during the colder months which means lower energy costs and an improved carbon footprint. In addition security was improved with safety glass and superior window locking systems. With the new windows and doors installed, the building also looks more modern.

### **Dual Coloured Window Frames**

Dual coloured windows and doors were installed at the rear and side elevations of the the property to recreate the original look of the building. We installed dual coloured uPVC frames that were white internally and a golden oak colour externally. The external look recreates a wood effect without the need for constant maintenance. Internally the white frames provides a light feel that can compliment any colour scheme.

### **A Working Care Home**

All works were carried out whilst the residents were on site. To ensure the least amount of disruption was caused, we worked closely with the care home staff and produced a detailed works schedule. This gave the staff the opportunity to plan ahead and ensure that the residents were in different parts of the property when works were being carried out.

For similar projects carried out by Waller Services, please click on the following link to our website-

<https://www.wallerservices.com/casestudies-category/glazing-commercial/>

## **Waller Commercial Building and Glazing**

Commercial building and glazing is a growth area for Waller Services. We work in the education and healthcare sectors. In addition other growth areas included local authority an the retail sectors. This is due to increased commercial developments in the south east. We install kitchen and toilet areas. We also install commercial windows and doors. For examples of some of our services, take a look at our commercial glazing case studies.

### **Our Company**

For over 25 years, Waller Services has worked on many commercial projects. Our reputation is

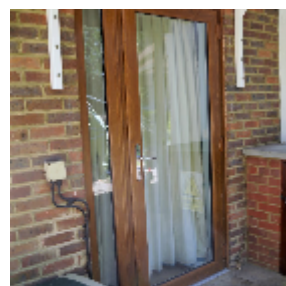
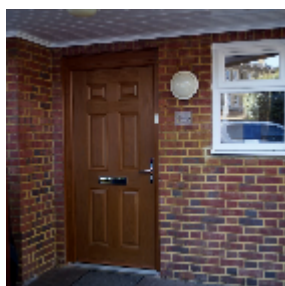
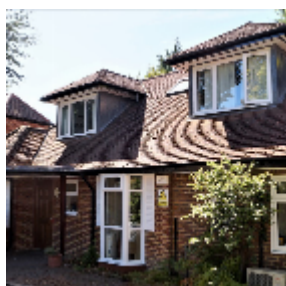
growing fast. The building services we provide range from refurbishments through to extensions as well as complete new builds. Additionally, our glazing division repairs windows and glass. We also install uPVC and aluminium windows and doors.

## Contact Waller Building and Glazing

Based in Sittingbourne we carry out works in Kent. If you would like a quotation on any size of commercial project, please call 01795 424435 or email [mark@wallerservices.com](mailto:mark@wallerservices.com)

## Social Media

To see what we are up to now, why not take a look on our Facebook and X pages, additionally check out our website



Building on trust... together

**Waller Associates Ltd**

Web: [www.wallerservices.com](http://www.wallerservices.com)

Tel: 01795 424 435  
Fax: 01795 424 812  
[sales@wallerservices.com](mailto:sales@wallerservices.com)