

## Project 381: Internal College Refurbishments

**Client:** EKC Group, Canterbury, Kent

**Programme:** 12 Weeks

**Construction Details:** Carpentry, Decorations, Demolition, Double Glazed, Dry Lining, Electrical Works, Floor Coverings, Flooring, Partitioning, Plastering, Plumbing, Refurbishment, Safety Glass, School Improvement, Suspended Ceilings, Toughened Safety Glass

[View this case study on WallerServices.com](http://WallerServices.com)



## **Internal College Refurbishments**

We were successful in winning this Internal College Refurbishments project via applying through an open tender. The project consisted of refurbishing five areas within Canterbury College.

### **Six Form Communal Area**

The college wanted this space to have a fresher, more modern feel. To accomplish this, new LED lighting was installed and the area was decorated throughout. Additionally, new flooring consisting of vinyl and carpet tiles was fitted. We also made an opening from one of the classrooms leading into the communal area which allowed for a more free flowing space.

### **Student Common Room**

To upgrade this room we installed LED lighting which provides a brighter feel and means the use of less energy, saving the college future energy costs. Additionally, the final elements included decoration throughout with the final touch being new carpet tiles.

### **Student Information Centre**

With the installation of a new double fire door set, we provided a new entrance, creating a more private area. The original shutters were no longer necessary so were enclosed. As well as decoration and new flooring, we added a kitchenette to create a hot drinks area.

### **SDF Construction Area**

To construct a new SDF construction area we reconfigured four rooms into two new large spaces. The increased room was required to accommodate the installation of new motor mechanic robots. The design to this flagship learning factory for young inspiring engineers of the future was started by demolishing walls and creating more open spaces. We also added full length glass screens along an external wall to create viewing areas. Decoration of the the rooms throughout, as well as the installation of suspended ceilings was the next task. New flooring was laid and data points and cables were installed, additionally, new plumbing was fitted to complete the rooms leaving them ready for the robots.

This was a great project and the final results left the areas looking like brand new rooms with bespoke usage for each area.

For more projects similar to this one, please click on the following link-  
<http://www.wallerservices.com>

-

## **Building Services We Provide In Schools**

The building services we provide include smaller refurbishments through to extensions and new builds. The services we provide include anything that a school would require. This includes, toilet and kitchen refurbishments. Check out our website case studies to view projects that we have recently completed.

### **Glazing Services We Provide In Schools**

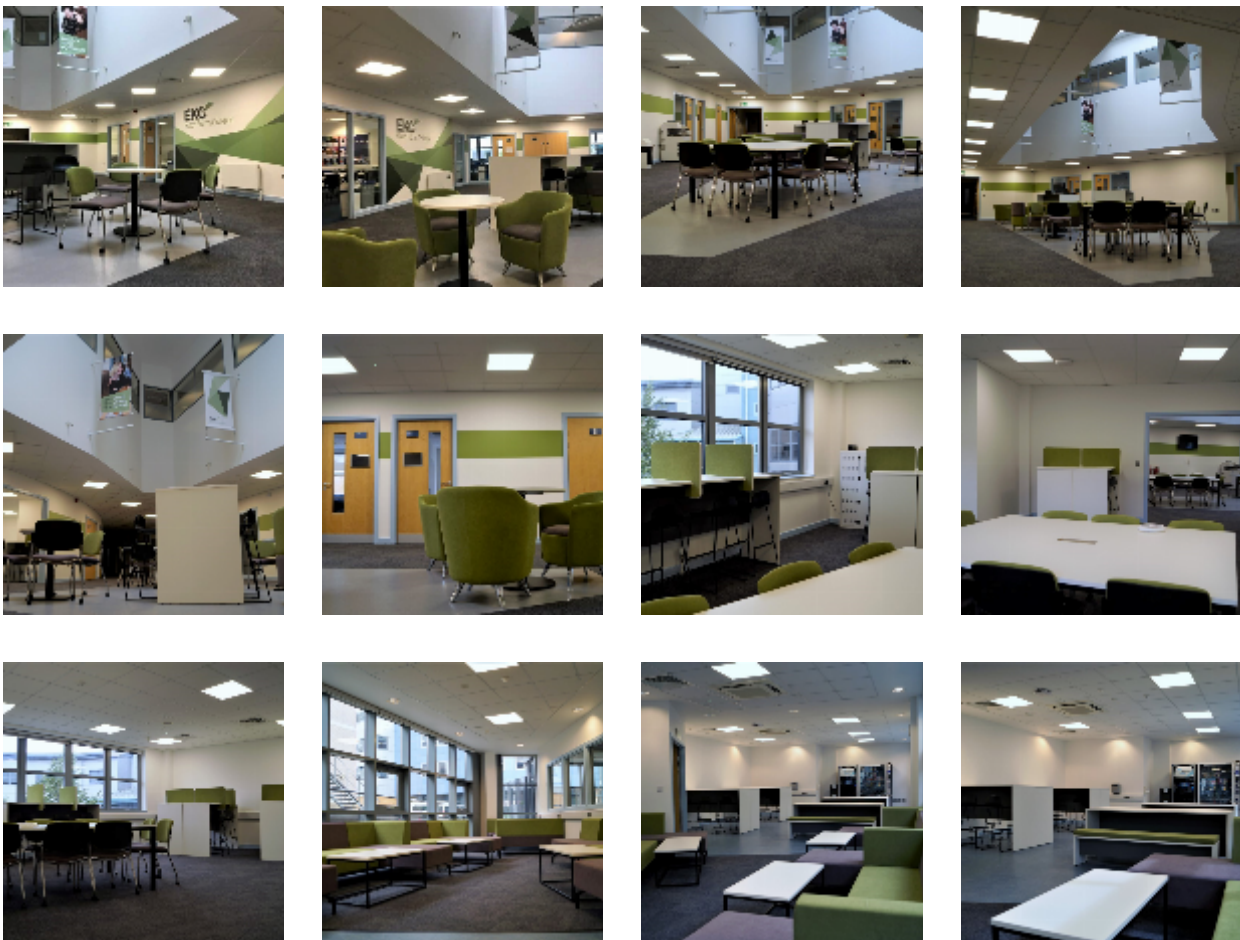
We carry out works from window and hinge repairs as well as complete aluminium and uPVC window and door installations.

### **Contact Waller Building and Glazing Services**

Based in Sittingbourne, Kent, we carry out works throughout the south east of England. If you would like a quotation on any size of building or glazing project please contact us. - - - - - Telephone – 01795 424435.

Additionally, why not check out what we are up to at the moment visit our Facebook page; <https://www.facebook.com/profile.php?id=100063701672876>

As well as this see what we are tweeting. <https://twitter.com/BuildingOnTrust>



Building on trust... together

**Waller Associates Ltd**

Web: [www.wallerservices.com](http://www.wallerservices.com)

Tel: 01795 424 435

Fax: 01795 424 812

[sales@wallerservices.com](mailto:sales@wallerservices.com)