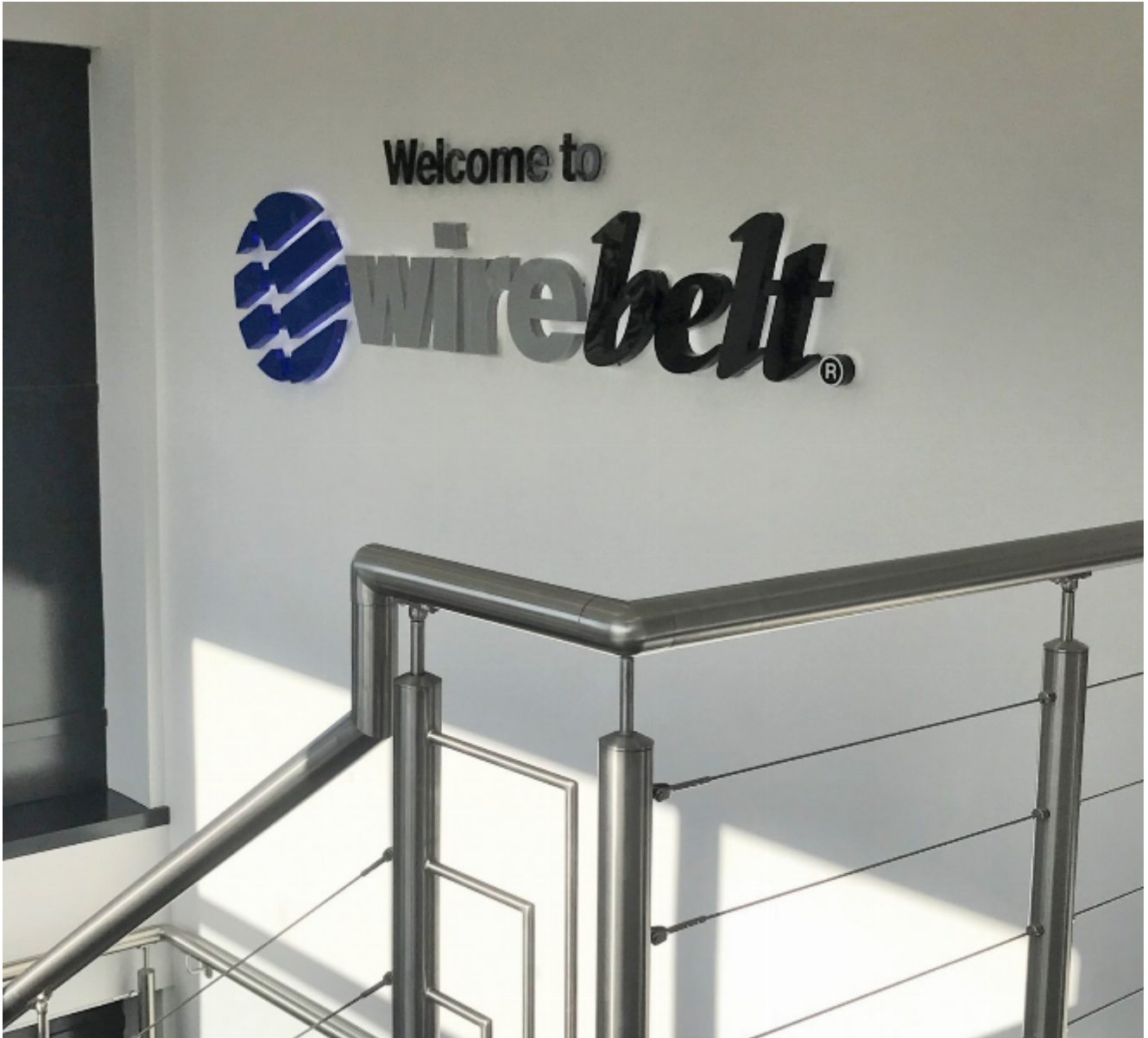


## Project 357: Wire Belt Reception Refurbishment

**Construction Details:** Decorations, Floor Coverings, Refurbishment, Suspended Ceilings

[View this case study on WallerServices.com](http://WallerServices.com)



## **Wire Belt Reception Refurbishment**

The Wire Belt reception refurbishment project was the latest in a series of works carried out by Waller Building Services for the company. Since completing our first project at Wire Belt, we have built a great relationship with them allowing us the opportunity to quote for additional works.

The latest project was to re-vamp the reception and stairwell which leads to the main office area. As well as other areas of the factory, the reception was starting to look dated and needed a refurbishment.

### **Refurbishment**

The existing carpet was ripped up and replaced with a new harder wearing carpet in the reception, on the stairs and the first floor. On the stairwell, the bannister and railings were removed and replaced with a bespoke stainless steel handrail and three cross rail system.- A new suspended ceiling was installed and any remaining woodwork was painted in an anthracite grey with the walls painted in a light grey eggshell finish. Finally, spraying the internal window frames in anthracite grey completed the look of the entrance. The final result was a modern, contemporary finish which will welcome future clients to the building.

For more examples of commercial works carried out by Waller Building and Glazing Services please click on the following link-<https://wallerservices.com/commercial-clients/>

### **Commercial Building**

Commercial building is a growth area for Waller Building. We work in the education and healthcare sectors. The retail sector is also an area of growth. This is due to many warehouse developments in the south east. We install toilet and kitchen areas. We also install commercial window and doors. For examples of our services, take a look at our commercial glazing case studies.

### **Waller Building**

In the last 25 years, Waller Building has worked on many commercial projects. Our reputation is growing fast. The services provided range from refurbishment through to extensions and complete new builds. Additionally our glazing department repairs windows and glass. We also install uPVC and aluminium windows and doors. One of the major areas that we are continuing grow is window replacement in schools. Waller Associates is Fensa, Chas, Constructionline and safecontractor approved. We are also a Kent County Council approved contractor. We would also be happy to give you a price for any refurbishment works.

### **Contact Waller Building**

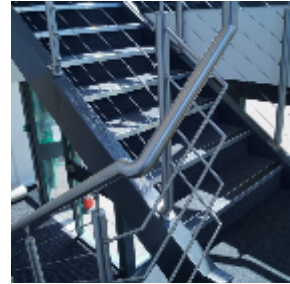
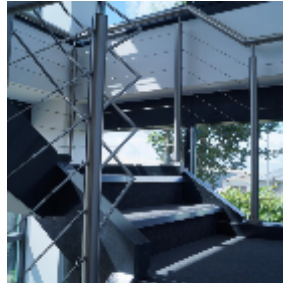
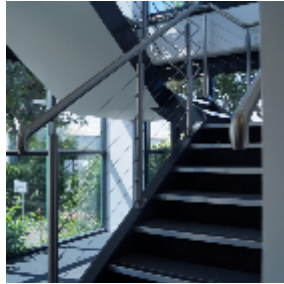
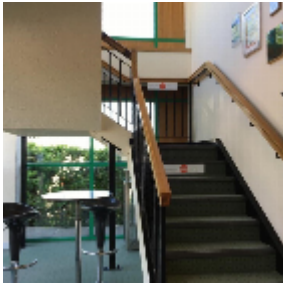
Based in Sittingbourne, Kent, we carry out works throughout the south east of England.-If you would

like a quotation on any size of glazing projects, please contact us. Call 01795 424435 or email [mark@wallerservices.com](mailto:mark@wallerservices.com)

## Twitter and Facebook

To see what we are up to now, why not take a look at our Twitter page- <https://twitter.com/i/notifications>

Also checkout our Facebook page



Building on trust... together

**Waller Associates Ltd**

Web: [www.wallerservices.com](http://www.wallerservices.com)

Tel: 01795 424 435

Fax: 01795 424 812

[sales@wallerservices.com](mailto:sales@wallerservices.com)