

## Project 346: Gravesend School Toilet Refurb

**Client:** St George's School, Gravesend

**Programme:** 4 Weeks

**Construction Details:**

[View this case study on WallerServices.com](http://WallerServices.com)



## **Gravesend School Toilet Refurb**

Waller Building Services carried out this Gravesend school toilet refurb during the summer holidays. St George's School wanted to modernise a toilet block at the school that had been unloved for many years. We were approached at an early stage of the design process.

### **Working with the Client**

Working with the school provided a solution that completely transformed the area. Large openings were created to provide an open plan feel to the toilets. A complete alteration to the layout of the cubicles and the addition of freestanding hand wash stations meant that we could utilise the existing area.

The areas have been completely transformed into clean, light open spaces and the school is extremely happy.

-

For similar projects that we carry out in schools please click on the following link to the education section of our website-<https://www.wallerservices.com/schools-education-clients/>

## **Waller Building and Glazing Services**

In the last seven years, Waller Associates has worked in over 150 schools. Our reputation in the education sector is growing fast. Waller Building and Glazing is Fensa, Chas, Constructionline and Safecontractor registered.- Additionally, all of our staff are DBS certified. This means that our staff are suitable to work in schools. Furthermore we would be happy to price any maintenance or refurbishment works for your school.

### **Building Services We Provide In Schools**

The building services we provide include smaller refurbishments through to extensions and new builds. We cover all the building as well as glazing services that a school would require. This includes, toilet and kitchen refurbishments. We also install fencing, flooring and carry out complete new builds. Check out our website case studies to see projects we have recently completed.

### **Glazing Services We Provide In Schools**

We carry out works from window and hinge repairs through to complete aluminium and uPVC window and door installations.

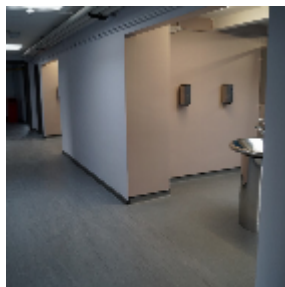
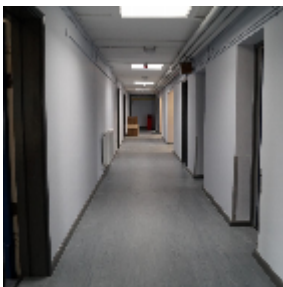
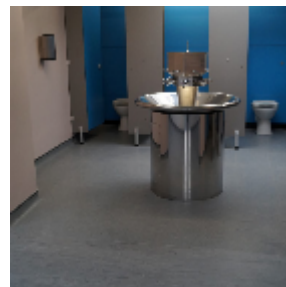
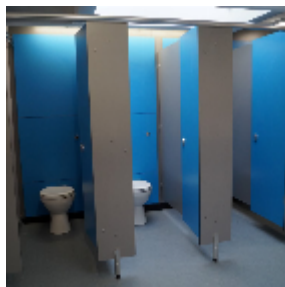
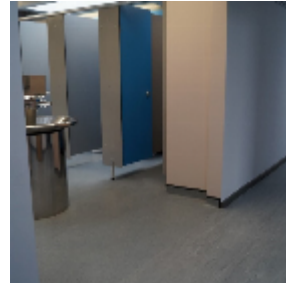
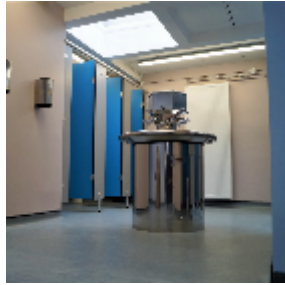
### **Contact Waller Building and Glazing Services**

Based in Sittingbourne, Kent, we carry out works throughout the south east of England.-If you would

like a quotation on any size of building project, please contact us. Telephone – 01795 424435  
Additionally email [mark@wallerservices.com](mailto:mark@wallerservices.com)

Visit our twitter page to see what we are up to at the moment-<https://twitter.com/BuildingOnTrust>

As well as twitter, why not visit our Facebook page too



Building on trust... together

**Waller Associates Ltd**

Web: [www.wallerservices.com](http://www.wallerservices.com)

Tel: 01795 424 435

Fax: 01795 424 812

[sales@wallerservices.com](mailto:sales@wallerservices.com)