

Project 331: Discovery School Toilet Refurbishment

Client: The Discovery School, West Malling, Maidstone, Kent

Programme: 5 Weeks

Construction Details: Cubicles, Floor Coverings, Plumbing, Refurbishment, Sanitary Ware, School Improvement, Toilet Cubicles, Toilet Refurbishment

[View this case study on WallerServices.com](https://www.wallerservices.com/case-study/project-331-discovery-school-toilet-refurbishment)



Discovery School Toilet Refurbishment

The Discovery School toilet refurbishment project consisted of four separate toilet refits. Two of the toilets were for the early year pupils and two for older pupils and the general public. The works entailed completely stripping out the sanitary ware, flooring and the fixtures and fittings. We installed new plumbing, concealed toilet suites, a solid trough and vanity basins. Additionally we also added new vanity units and fresh brightly coloured cubicles.

To introduce a contemporary look, we installed rear duct paneling and added new coved flooring. The final touch was to completely redecorate each toilet throughout. The end result was fresh, clean and bright new toilets for the school who were very pleased with the outcome.

For similar projects that we carry out in schools please click on the following link to the education section of our website-<https://www.wallerservices.com/schools-education-clients/>

Waller Building and Glazing Services

In the last seven years, Waller Associates has worked in over 150 schools. Our reputation in the education sector is growing fast. Waller Building and Glazing is Fensa, Chas, Constructionline and Safecontractor registered.- Additionally, all of our staff are DBS certified. This means that our staff are suitable to work in schools. Furthermore we would be happy to price any maintenance or refurbishment works for your school.

Building Services We Provide In Schools

The building services we provide include smaller refurbishments through to extensions and new builds. We cover all the building as well as glazing services that a school would require. This includes, toilet and kitchen refurbishments. We also install fencing, flooring and carry out complete new builds. Check out our website case studies to see projects we have recently completed.

Glazing Services We Provide In Schools

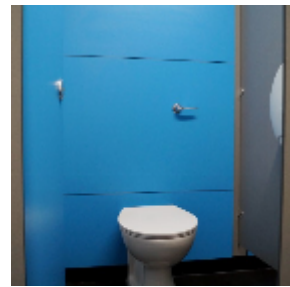
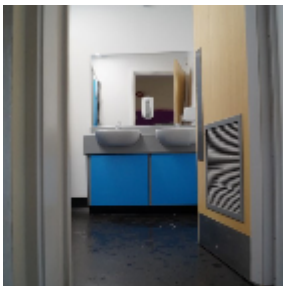
We carry out works from window and hinge repairs through to complete aluminium and uPVC window and door installations.

Contact Waller Building and Glazing Services

Based in Sittingbourne, Kent, we carry out works throughout the south east of England.-If you would like a quotation on any size of building project, please contact us. Telephone – 01795 424435
Additionally email mark@wallerservices.com

Visit our twitter page to see what we are up to at the moment-<https://twitter.com/BuildingOnTrust>

As well as twitter, why not visit our Facebook page too



Building on trust... together

Waller Associates Ltd

Web: www.wallerservices.com

Tel: 01795 424 435

Fax: 01795 424 812

sales@wallerservices.com