

## Project 286: Library Window Installation

**Client:** Mewday Council

**Programme:** 4 Weeks

**Construction Details:** Box Scaffolding, British Standards, Building Control, Egress Hinges, Safety Glass, Solar Filming, Teleflex Window Winders, U-Value 1.4, uPVC Windows

[View this case study on WallerServices.com](https://www.waller-services.com/case-study/project-286-library-window-installation)



## **Gillingham Library Window Installation**

Waller Glazing Services carried out the Gillingham library window installation after being awarded the project by Medway Council. We were successful by coming first in the Medway Council tendering process. The rear windows of the library in Gillingham, Kent were the original single glazed Crittal windows.

We designed the the windows so that they would match the existing styles in the area which meet new British Standards by containing safety glass. Additionally, the high specification windows achieve the required u-value of 1.4. All of the windows come with egress hinges which allows for easy cleaning and easy escape routes. The new windows bring a modern feel to the whole library.

## **Commercial Glazing**

The commercial glazing sector is a growth area for Waller Glazing. We work in the education and healthcare sectors. The retail sector is also a growth area. This is due to many new retail developments in the south east. We install shopfronts and curtain walling. We also install commercial windows and doors. For examples of our services, take a look at our commercial glazing case studies.

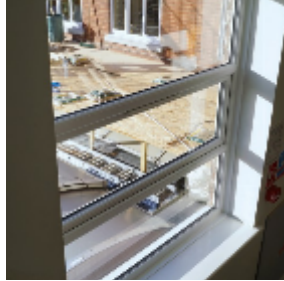
## **Waller Glazing**

In the last five years, Waller Glazing has worked in many commercial environments. Our reputation is growing fast. The services provided range from window repairs through to complete window and door installations. We repair glass and replace broken double glazed units. Additionally we can repair door and window handle and hinges. One of the major areas that we are continuing grow is window replacement and installation in schools. We install both aluminium and uPVC windows and doors. Waller Glazing is -Fensa, Chas, Constructionline and safecontractor approved. We are also a Kent County Council approved contractor. You can be assured that we are a company that is built on trust. If your school is planning a window project, we would be delighted to provide you with a quotation. Furthermore we would be happy to give you a price for any window repairs.

## **Contact Waller Glazing**

We are based in Sittingbourne, Kent. We carry out works throughout the south east of England.-If you would like a quotation on any size of glazing projects, please contact us. Call 01795 424435 or email [mark@wallerservices.com](mailto:mark@wallerservices.com)

Visit our twitter page to see what we are up to at the moment- <https://twitter.com/BuildingOnTrust>



Building on trust... together

**Waller Associates Ltd**

Web: [www.wallerservices.com](http://www.wallerservices.com)

Tel: 01795 424 435

Fax: 01795 424 812

[sales@wallerservices.com](mailto:sales@wallerservices.com)