

## PROJECT 119: Refurbishment of Fire Escape Staircase at Guildhall Museum

**Client:** Guildhall Museum, Rochester

**Programme:** 10 Weeks

**Construction Details:** Carpentry, Decorations, Demolition, Dry Lining, Electrical, Floor Coverings, Plumbing, Renovation, Suspended Ceilings

[View this case study on WallerServices.com](http://WallerServices.com)



## **Refurbishment of Fire Escape Staircase at Guildhall Museum**

Refurbishment of Fire Escape Staircase at Guildhall Museum – The project entailed removing the existing suspended ceiling, lighting and wall paper and replacing. Additionally flooring to the fire escape staircase and landings was removed with new re-installed. The discovery of asbestos complicated the works. Within the partitions around the stairs, the asbestos had to be removed by a specialist contractor. This held the project up by two weeks. However, this delay was overcome and the installation of new suspended ceilings, lighting, flooring and decorating were all carried out within the timescale specified by the client.

## **Commercial Building**

Commercial building is a growth area for Waller Building. We work in the education and healthcare sectors. The retail sector is also an area of -growth. This is due to many warehouse developments in the south east. We install toilet and kitchen areas. We also install commercial window and doors. For examples of our services, take a look at our commercial glazing case studies.

## **Waller Building**

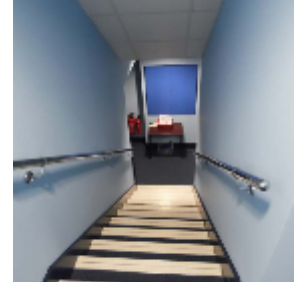
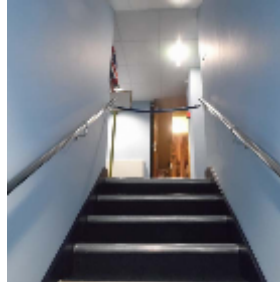
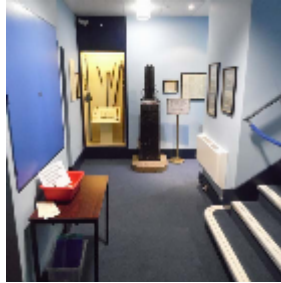
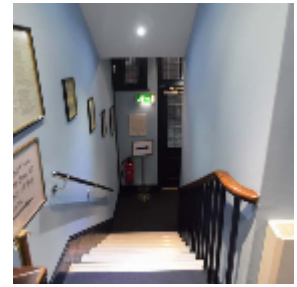
In the last 25 years, Waller Building has worked on many commercial projects. Our reputation is growing fast. The services provided range from refurbishment through to extensions and complete new builds. Additionally our glazing department repairs windows and glass. We also install uPVC and aluminium windows and doors. One of the major areas that we are continuing to grow is window replacement in schools. Waller Building is registered to Fensa, Chas, Constructionline and safecontractor. We are also a Kent County Council approved contractor. We are a company you can trust. If you are planning a building project we would be delighted to provide you with a quotation. We would also be happy to give you a price for any refurbishment works.

## **Contact Waller Building**

Based in Sittingbourne, Kent we carry out works throughout the south east of England. If you would like a quotation on any size of glazing projects, please contact us. Call 01795 424435 or email [mark@wallerservices.com](mailto:mark@wallerservices.com)

For similar projects that we carry out in schools please click on the following link to the education section of our website [www.wallerservices.com/schools-education-clients/](http://www.wallerservices.com/schools-education-clients/)

-



Building on trust... together

**Waller Associates Ltd**

Web: [www.wallerservices.com](http://www.wallerservices.com)

Tel: 01795 424 435

Fax: 01795 424 812

[sales@wallerservices.com](mailto:sales@wallerservices.com)